

The Green Belt

Predators and Semi-Domesticated Reindeer

Alfred Colpaert, University of Eastern Finland

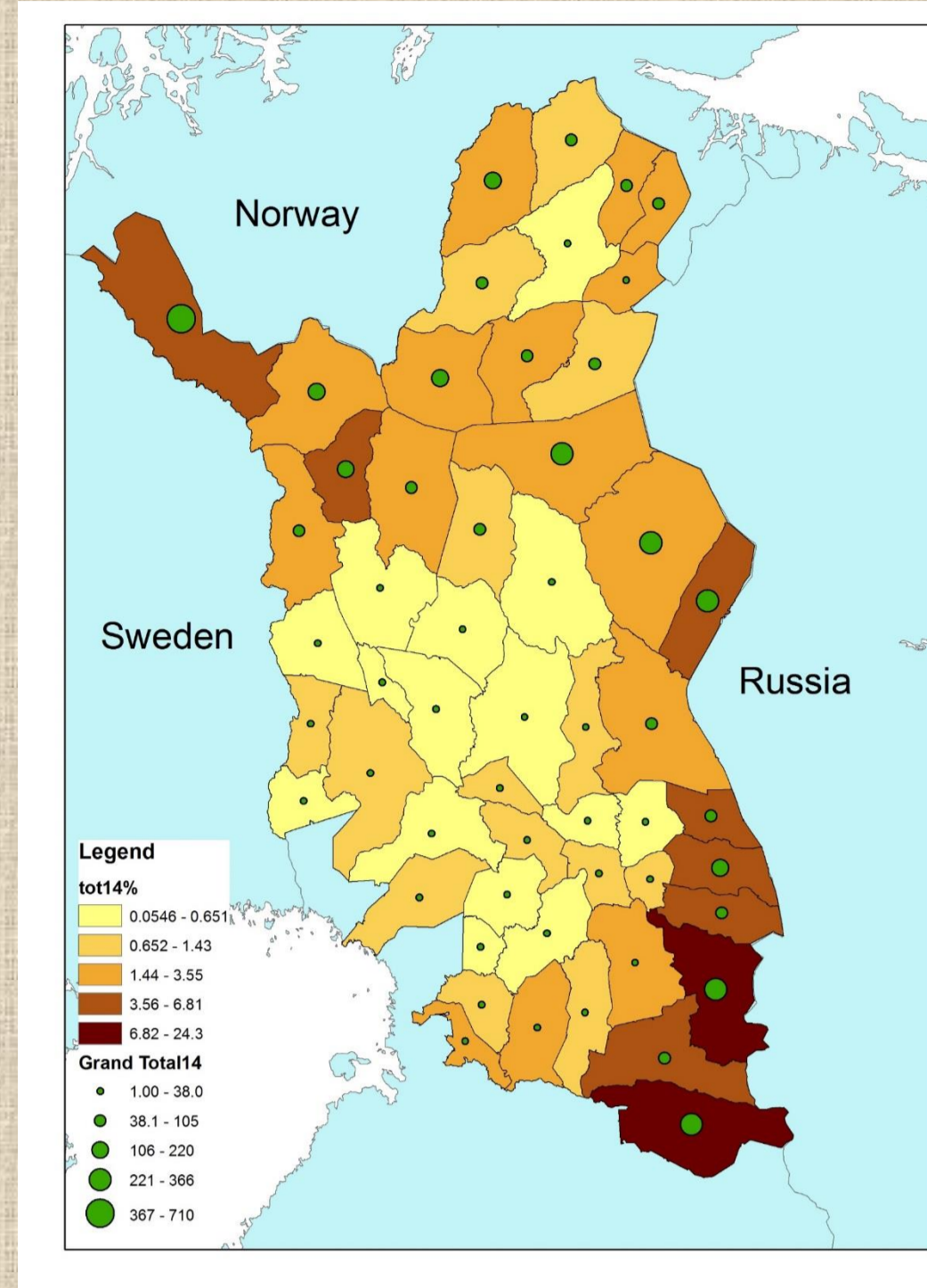


Fig 1. Total 2017

Reindeer loss compensation data: : MAVI 2018, Agency for Rural Affairs

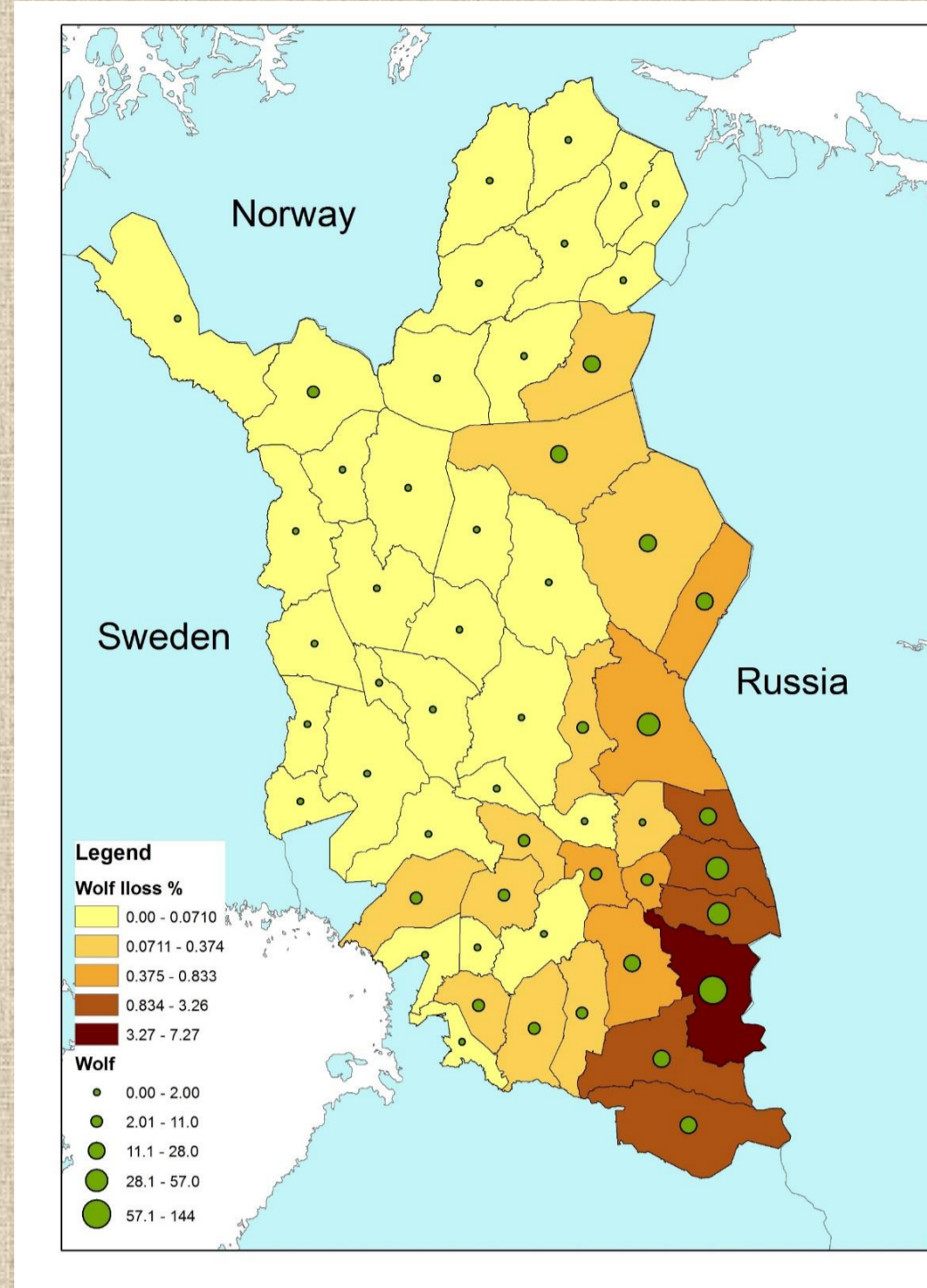


Fig 2. Wolf 2017

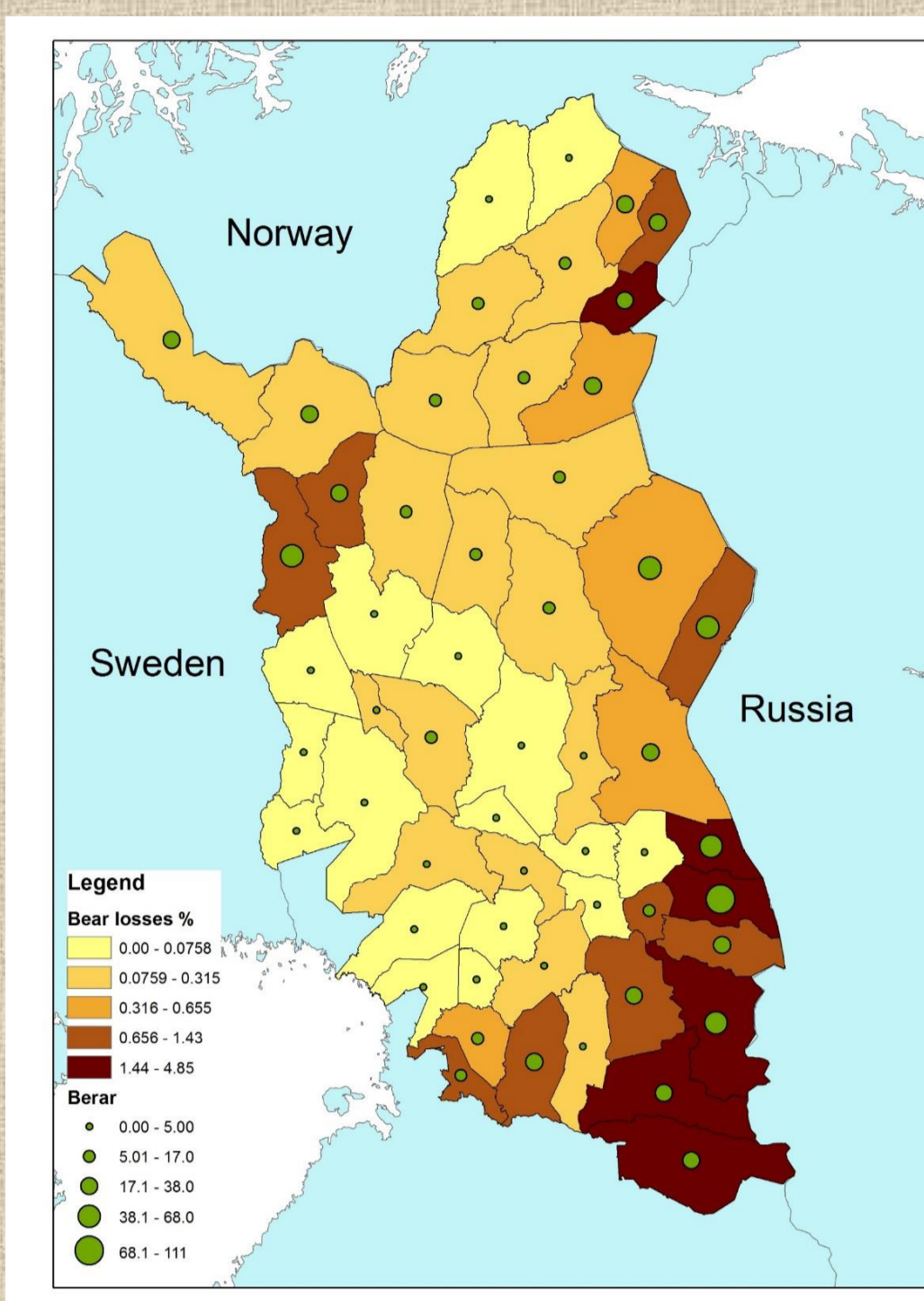


Fig 3. Bear 2017

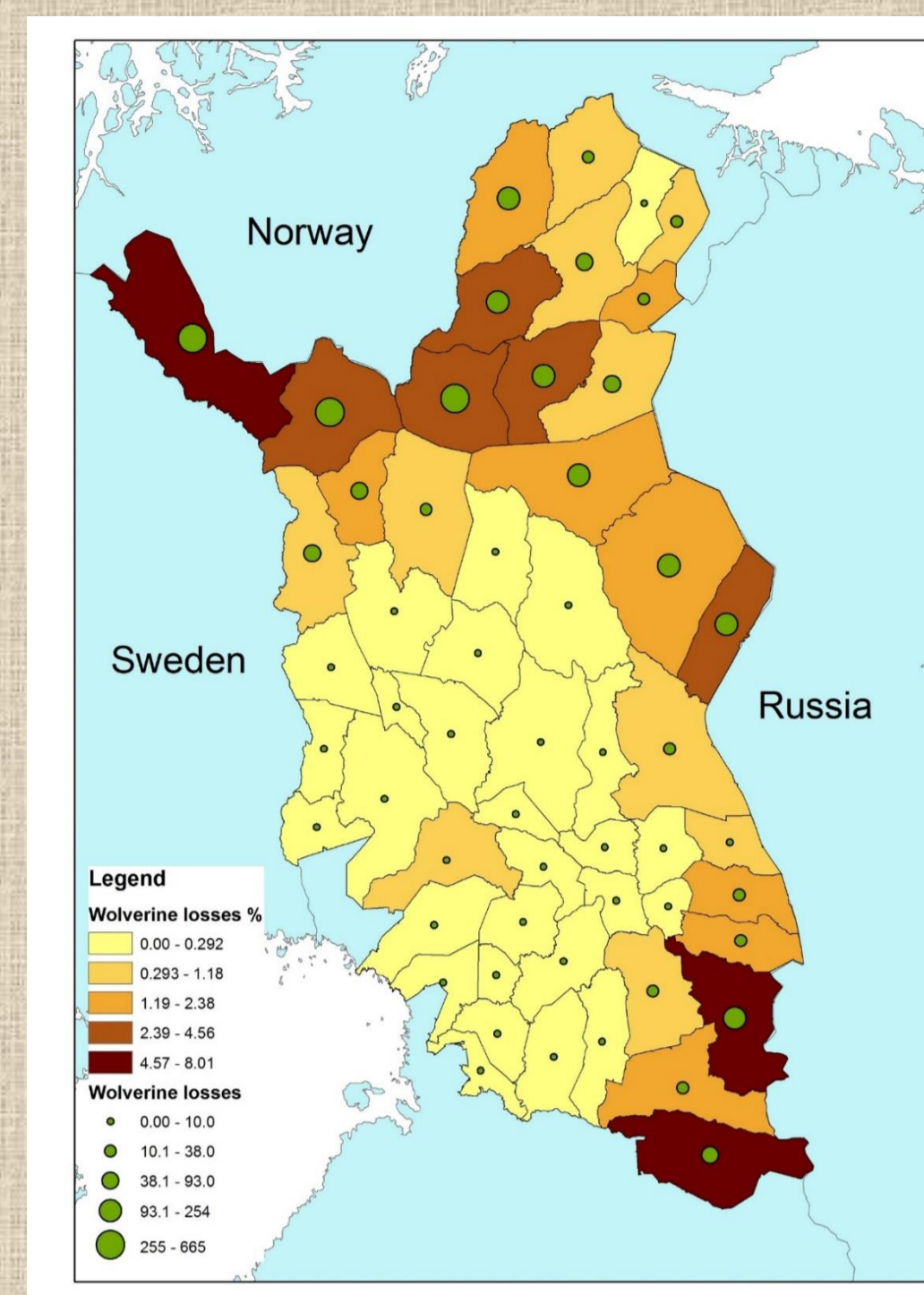


Fig 4. Wolverine 2017

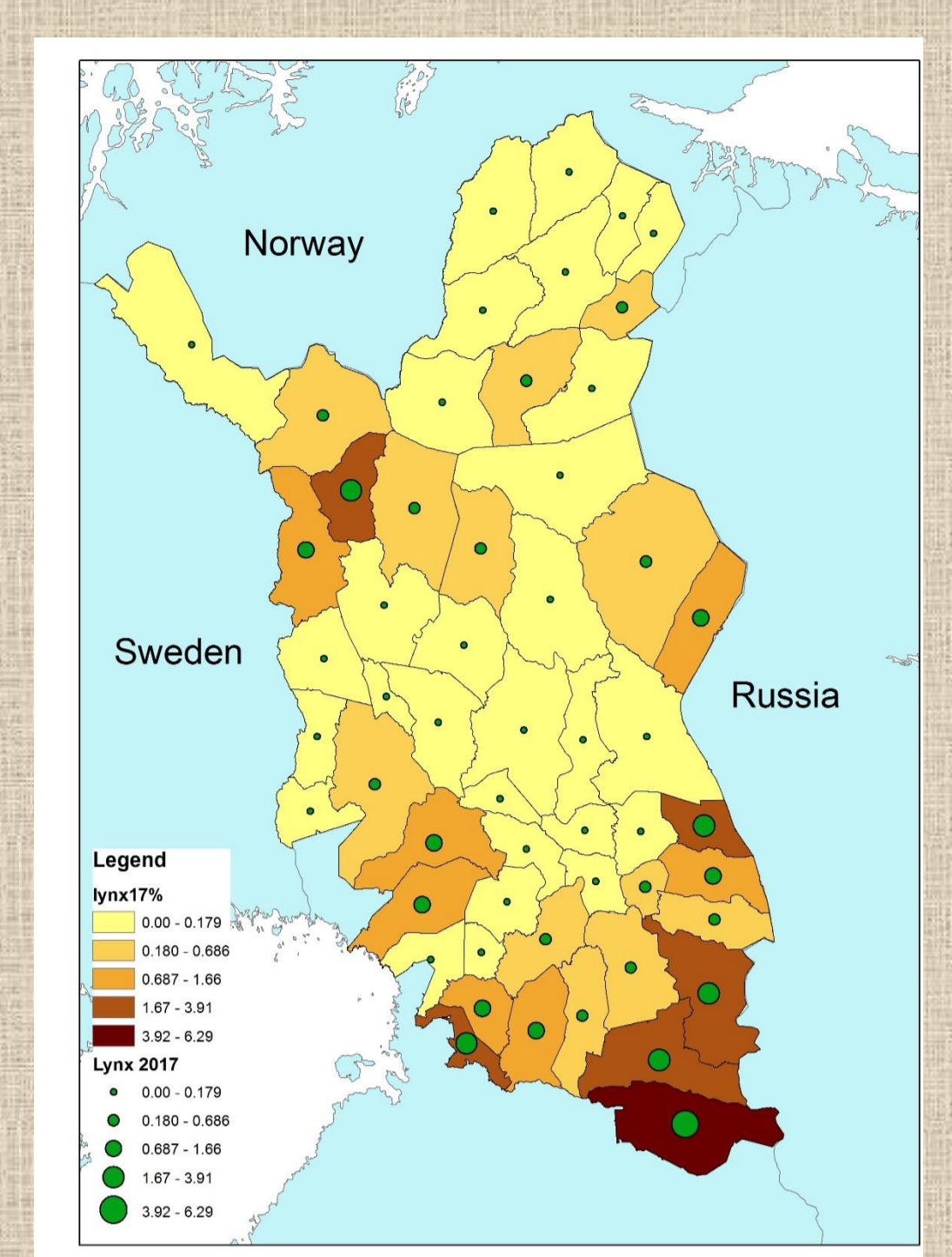


Fig 4. Lynx 2017

Reindeer husbandry is one of the oldest forms of livelihood in northern Finland, and is of great cultural and social importance; also, the local and regional economic impacts are significant (tourism, local food etc.) Large predators are part of the northern Boreal forest and tundra area. Although predators are removed from the Finnish reindeer herding area, losses are substantial. The Green Belt of Fennoscandia functions as an ecological corridor and reserve for large predators (especially wolf, bear and wolverine). In 2017 total losses to predation was 5 272, out of a total of 185 480 reindeer (2014: 4 373 of 180 961).

Figures 1 -4 show the absolute and the relative losses (number of reindeer killed) attributed to the four main predators. The effect of the Green Belt border area with Russia is clear, as well as the south-eastern border of the reindeer herding area. Wolf, although nearly absent from the reindeer area can cause substantial local losses, and is a dominant factor in the east and southeast. Figure 5 shows present wolf sightings, indicating the near wolf free status of the reindeer herding area. Wolverine, although present in the whole area, seems to affect the more northern areas (mountainous tundra areas) more due to their effective hunting tactics in this terrain. Table 1 show the population assessment, after the hunting season.

Table 1. Predator presence in Finland and Reindeer Herding Area

	Rest of Finland area	Reindeer herding
Wolf	170	7
Bear	1700	300
Wolverine	3400	400
Lynx	2300	100

Source: Luke population assessment

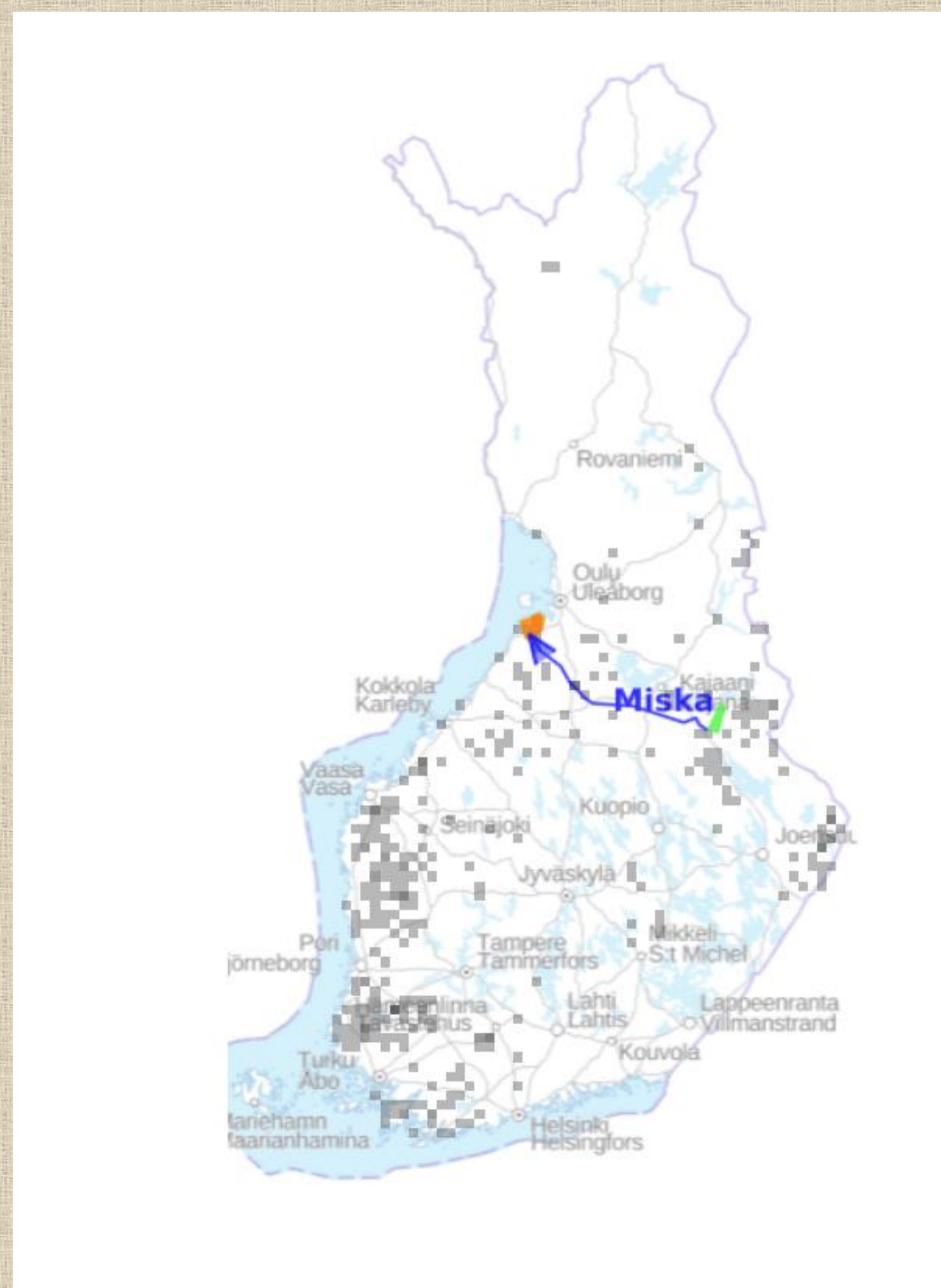
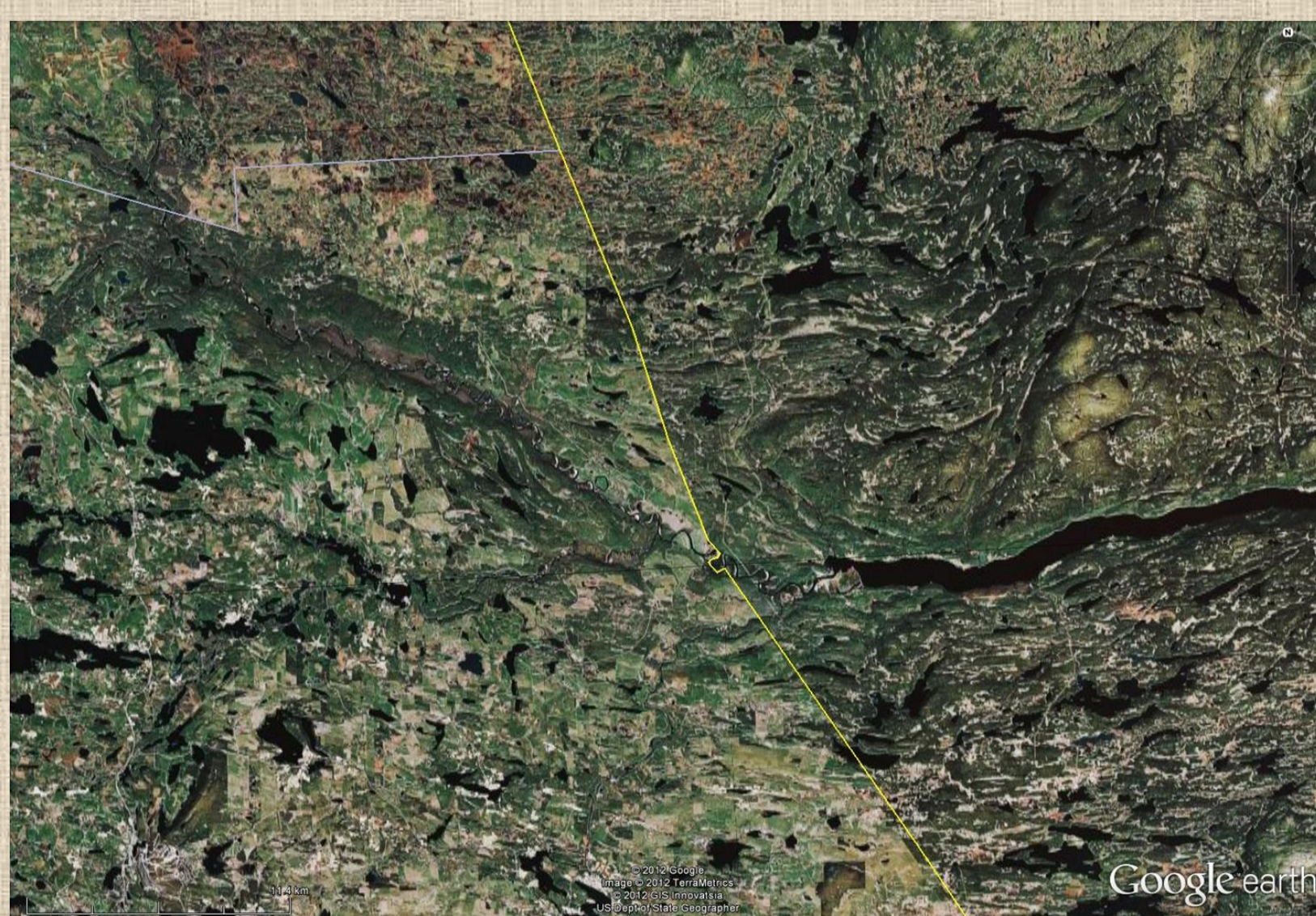


Fig 5. Wolf sightings 2018 (Luke)



Finnish reindeer



Finnish Russian Border near Kuusamo



Borer zone near Salla